

8

MASSING STUDY



MASSING

The massing form evolved from these factors:

- The District preferred a two story school for a smaller scale building that would fit into the pastoral context and relate to the campus context.
- Shared and public spaces, located at the front of the building, are reflected in lower height volumes with extensive glazing and accent colored brick cladding.
- Academic wings were created by the determination that each grade level desired its own neighborhood identity.
- Project Areas and Resource Rooms, the heart

of the grade neighborhoods, are defined at the exterior facade by glazed elements which punctuate the academic wings.

- Wetland setbacks and existing forest boundaries constrained building location and footprint.
- The desire for more private outdoor learning space reinforced the notion of academic wings which create a protected three-sided court.

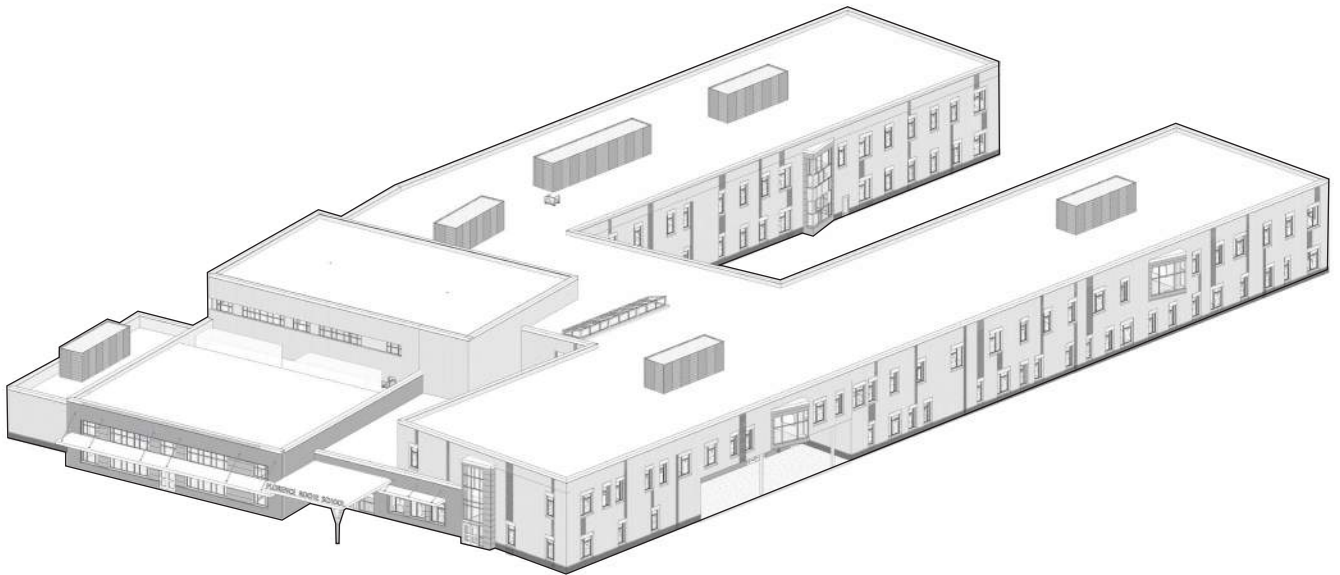
Refer to the School Building Committee meeting on July 28, 2020 for an in-depth presentation on the local character and precedents that were studied and incorporated into this design. See Appendix 21/20.4 – School Building Committee Materials.



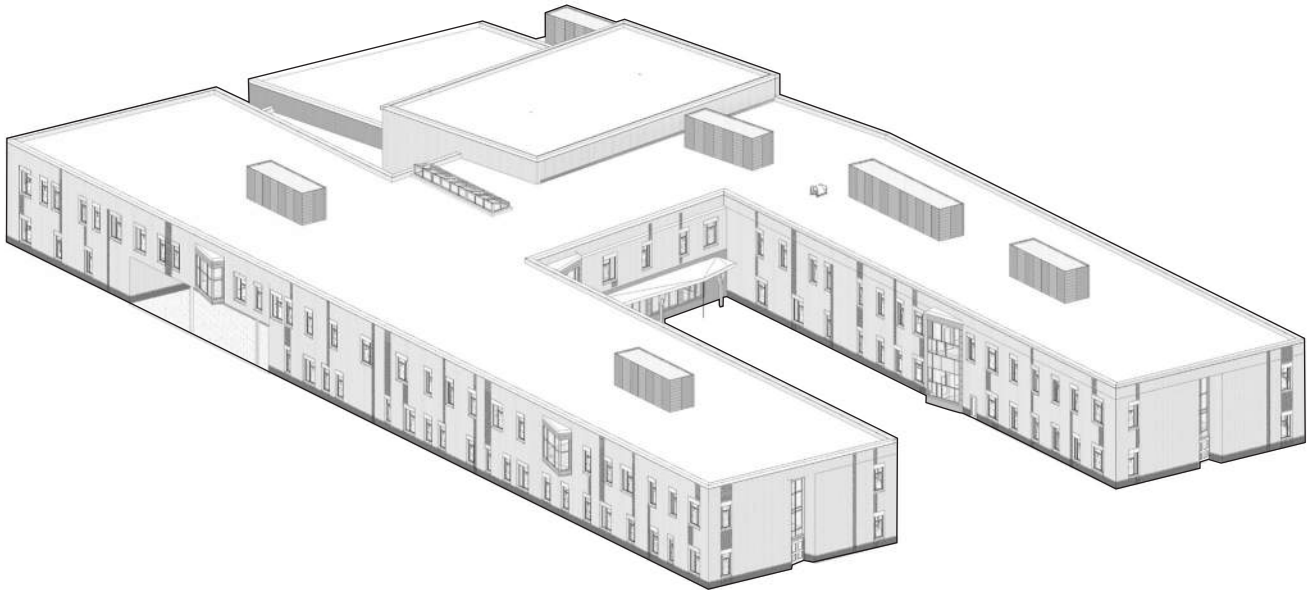
View of the front entrance, the west facade.



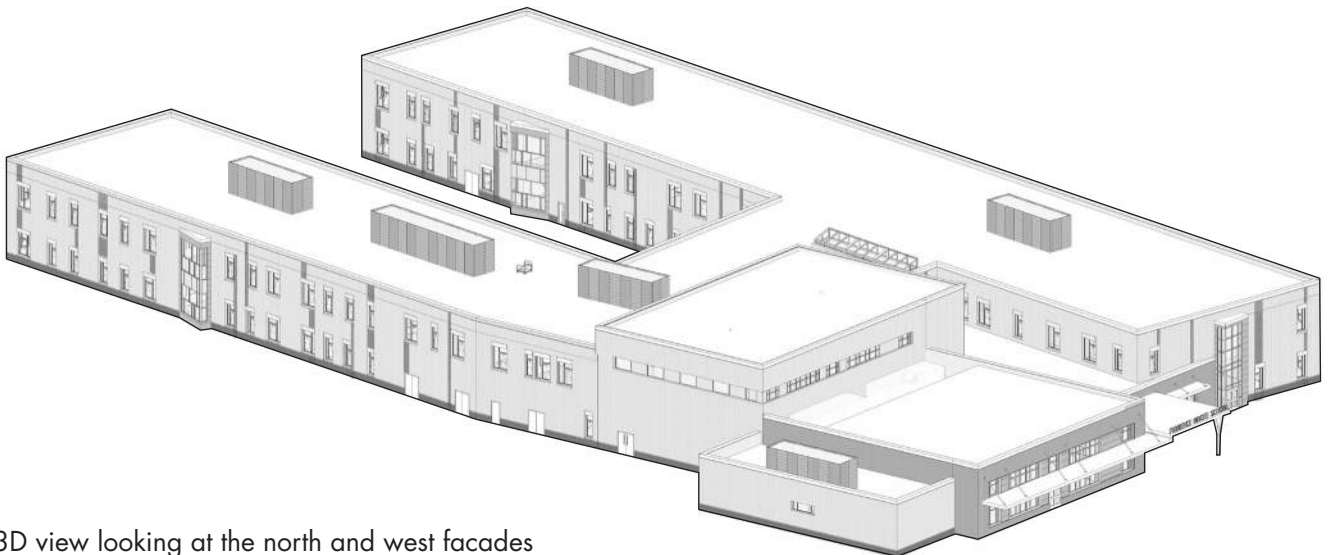
Plan showing the building's integration with its surroundings.



3D view looking at the entrance and west and south facades



3D view looking at the south and east facades



3D view looking at the north and west facades



View looking southwest toward the media center in the Outdoor Learning Lab



View looking northwest toward the media center in the Outdoor Learning Lab



View looking at the east facade, through the Outdoor Learning Lab to the Media Center

