

3 INITIAL SPACE SUMMARIES

3.1	Initial Space Summary	1
3.2	Existing Facility Floor Plans	3
3.3	Proposed Variances from MSBA Guidelines	4

INTRODUCTION
1

EDUCATIONAL
PROGRAM
2

INITIAL SPACE
SUMMARY
3

EVAL. OF EXISTING
CONDITIONS
4

SITE DEVELOPMENT
REQUIREMENTS
5

PRELIMINARY EVAL.
OF ALTERNATIVES
6

LOCAL ACTIONS
& APPROVALS
7

APPENDIX
8



3.1 Initial Space Summary

The design enrollment for the Florence Roche Elementary School project is 645 students in grades K-4. The Initial Space Summary template included in this PDP was developed through a series of three visioning sessions, as well as discussions with key administration members of the school and the Groton-Dunstable Regional School District. The first visioning session was open to the entire community, and the second two sessions comprised a select but diverse group of faculty, staff and parents. These visioning sessions were conducted in November and December of 2019. Visioning session reports, located in Appendix 8/2.17, are a record of those discussions and they represent the desires and attitudes toward organization and pedagogy for teaching and learning in the District. This process was used to inform the development of the Educational Program (see Section 2) and the Initial Space Summary template

This chart summarizes the differences between the net square footages outlined in this PDP, and the net square footages supplied in the MSBA Guidelines. A more detailed Space Summary spreadsheet can be found on the following page.

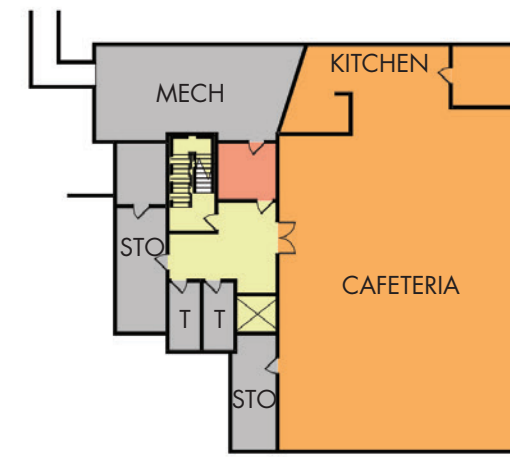
ROOM TYPE	PDP REPORT	MSBA GUIDELINES	Δ PDP V. MSBA	COMMENTS
Core Academics	33,600	31,450	+2,150	<ul style="list-style-type: none"> Additional classroom Multi-Purpose Room
Special Education	11,500	7,550	+3,950	<ul style="list-style-type: none"> Flexible / varied spaces to support UDL OT/PT, Quiet Rooms, Small Group Math
Arts & Music	5,000	5,000	—	
Health & Physical Education	8,000	6,300	+1,700	<ul style="list-style-type: none"> Bleachers for one grade level Regulation High School court with 6 hoops and divider for 2 half courts
Media Center	3,573	3,573	—	
Dining & Food Service	8,459	8,459	—	
Medical	610	610	—	
Administration & Guidance	2,630	2,630	—	
Custodial & Maintenance	2,245	2,245	—	
Other	150	0	+150	<ul style="list-style-type: none"> Before-school programming storage

- INTRODUCTION 1
- EDUCATIONAL PROGRAM 2
- INITIAL SPACE SUMMARY 3
- EVAL. OF EXISTING CONDITIONS 4
- SITE DEVELOPMENT REQUIREMENTS 5
- PRELIMINARY EVAL. OF ALTERNATIVES 6
- LOCAL ACTIONS & APPROVALS 7
- APPENDIX 8

3.2 Existing Facility Floor Plans



MAIN LEVEL



LOWER LEVEL



- INTRODUCTION 1
- EDUCATIONAL PROGRAM 2
- INITIAL SPACE SUMMARY 3
- EVAL OF EXISTING CONDITIONS 4
- SITE DEVELOPMENT REQUIREMENTS 5
- PRELIMINARY EVAL OF ALTERNATIVES 6
- LOCAL ACTIONS & APPROVALS 7
- APPENDIX 8

3.3 Proposed Variances from MSBA Guidelines

The proposed Space Summary template has been adjusted to reflect the Educational Program (Section 2).

CORE ACADEMIC SPACES

- One additional general classroom is required to accommodate six classrooms per grade levels 1-4, for a total of 24 general classrooms. In addition, 50 square feet per classroom are dedicated to a shared Project Areas for each grade level. The additional classroom and Project Area allotment result in a request for 950 net square feet over the MSBA Guidelines.
- To support Universal Design for Learning, students need a space for activities that require more open floor space than can be found in a classroom or shared neighborhood collaborative space (activities like informal performances, skits, role playing, and team-building games). A Multi-Purpose Room would allow for better differentiation, encourage classes to join together for collaboration, create opportunities for community involvement in project-based learning, and provide opportunities for teachers to co-serve students. This space would be shared among all grade levels and would be a heavily programed space, but when the room is not being actively used for UDL purposes, it would serve as a space for indoor recess during bad weather, and as a secondary space for Physical Education classes. This is a request for 1,200 net square feet over the MSBA Guidelines.

The total additional Core Academic Spaces requirements amount to a request for 2,150 net square feet over the MSBA Guidelines.

SPECIAL EDUCATION

- An additional Small Group Room is required for Math education. This is a request for 500 net square feet over the MSBA Guidelines.
- Quiet Space rooms are part of the District's requirements for supporting Social and Emotional Learning, as well as providing a de-escalation space for any student who may need it. This is a request for 500 net square feet over the MSBA Guidelines.
- A variety of flexible break-out rooms are required to incorporate Universal Design for Learning, a key component in the District's educational strategy. This is a request for 1,000 net square feet over the MSBA Guidelines.
- The Occupational Therapy and Physical Therapy programs provide direct therapy to students in small group settings, using specialized equipment such as trampolines, swings, obstacle courses, and more. This equipment requires a dedicated

space to provide a controlled setting for safety and proper instruction. A dedicated OT/PT room is a request for 1,200 net square feet over the MSBA Guidelines.

- The ELL and SLP programs require dedicated space for both private offices and space for student therapy, both individually and in small group settings. The ELL and SLP specialists include a Teacher of the Deaf, an Educational Audiologist, an Orientation and Mobility Specialist, an Assistive Technology Specialist, and an Augmentative and Alternative Communication Specialist. These specialists provide consultation to school staff and conduct evaluations to identify students needing therapy for a variety of communication challenges. This is a request for 750 net square feet over the MSBA Guidelines.

The total additional Special Education requirements amount to a request for 3,950 net square feet over the MSBA Guidelines.

ART & MUSIC

This category is consistent with the MSBA Guidelines.

HEALTH & PHYSICAL EDUCATION

The P.E. program's goal is to have a regulation high school basketball court in the Gymnasium. This is a request for 1,700 net square feet over the MSBA Guidelines.

MEDIA CENTER

This category is consistent with the MSBA Guidelines.

DINING & FOOD SERVICE

This category is consistent with the MSBA Guidelines.

MEDICAL

This category is consistent with the MSBA Guidelines.

ADMINISTRATION & GUIDANCE

This category is consistent with the MSBA Guidelines.

CUSTODIAL & MAINTENANCE

This category is consistent with the MSBA Guidelines.

OTHER

The Florence Roche Elementary School has a before-school program which takes place in the Cafetorium and/or the Gymnasium. This program requires dedicated storage space. This is a request for 150 net square feet over the MSBA Guidelines.

NON-PROGRAMMED SPACED

The Gross Square Footage has been adjusted to 101,724 gross square feet to utilize a 1.5 Grossing Factor (GFA/NFA).

INTRODUCTION	1
EDUCATIONAL PROGRAM	2
INITIAL SPACE SUMMARY	3
EVAL. OF EXISTING CONDITIONS	4
SITE DEVELOPMENT REQUIREMENTS	5
PRELIMINARY EVAL. OF ALTERNATIVES	6
LOCAL ACTIONS & APPROVALS	7
APPENDIX	8